



Scan Me!



The Pedal Post

Winter/Spring 2015 • Volume 1, Issue 2

ParadiseCreekBikes.com • Facebook.com/ParadiseCreekBikes • ParadiseCreekBikes@gmail.com

Customer Files: Glitter Dreamin'



By Stephanie Berry

Three years ago I decided to switch careers and go back to school. As graduation approached, I suspected that my boyfriend was plotting an elaborate graduation gift. I started to worry that he was planning something expensive and bike-related, and I hoped he wasn't going to blow his savings on a romantic endorsement of my life choices.

Graduation came and Adam presented me with a little card that said (in purple sparkly handwriting), "You made it this far...now it's time to live your glitter dreams." I knew what that meant and my heart jumped. I'd been coveting a purple Surly Straggler—official paint color Glitter Dreams—for quite awhile. I was about to tell him a whole bike was too expensive, but he quickly explained that he'd simply bought the bike frame. This man truly knew the way to my heart: I'd be able to hand-pick the components myself and build the bike of my dreams. Best of all, he suggested that I build it as a touring bike, referencing our dream of touring New Zealand on our [eventual] honeymoon. Boyfriend points: *Over 9000!*

I found T-Jay Clevenger and Paradise Creek Bicycles a few months later. Even though Para-

dise is a two-hour drive from my home in Grangeville, I knew immediately that it was the perfect shop to help me realize my Glitter Dreams. T-Jay enthusiastically met with me to discuss components; I realized we were on similar nerdy wavelengths when he demonstrated his own color-coordinated custom green bike. As soon as T-Jay figured out that I was very much a purple girl, it was *on*. T-Jay's eyes sparkled—or should I say, they glittered—with plans and bling items galore.

We spent the next few weeks tweaking a spreadsheet until T-Jay was sure it had everything I needed. Then he ordered parts while I daydreamed about taking my first ride up Old White Bird Hill. T-Jay turned an intimidating task into a thrilling and personally-tailored experience. He let me hang out at the shop and watch him build the bike, and he meticulously fit it to me once it was complete. He even surprised me with amazing little touches like purple spoke nipples, purple chainring bolts, and creative rear wheel spoke threading—all of which he did as a surprise to make my bike as unique (and purple) as possible.

Some of my favorite features on my Surly Straggler Glitter Dreams Bike include front

and rear Hope hubs, headset, quick-release skewers and seat post clamp in purple, Salsa Woodchipper bars (with purple bar tape), Avid BB7 160 mm mechanical disc brakes, Alex Adventurer rims, Dura-Ace downtube shifters, a Brooks B17 saddle, and of course, purple spoke nipples!

Thanks to T-Jay, the building of my dream bike was a gratifying experience. Now it's up to me to conquer Old White Bird Hill—and it's up to Adam to pop the question so we can make that New Zealand dream come true!

Owner's Letter

Thankful New Year

Happy New Year from all of us at Paradise Creek Bicycles!

I'd like to start the new year with things from last year for which I'm proudly thankful:

First, all of you customers, who voted us No. 4 in the nation in *Active Times* magazine.



Next, my wonderful staff, including new newsletter/social-media guru Jonathan Gradin.

Community Involvement: We fixed more than 120 bikes for Palouse Prairie School of Expeditionary Learning (PPSEL) students before their Bicycle Adventure Friday trip on the Latah Trail; performed volunteer maintenance on more than 70 bikes during Moscow Safe Routes to School's "Bike to School" day; teamed with local merchants to give free helmets and safety checks at the Officer Lee Newbill Safety Fair; and Science on Ice, a fun, hands-on demonstration of physics to more than 300 local fifth-grade students.

Lastly, I'm immensely grateful for the warm fall we had, as well as the advent of fat tires for continued riding in snow and other conditions. Our revamped mechanic's area has vastly improved lighting and headroom; photos to follow soon.

See you soon!
T-Jay Clevenger

Upcoming Events

Palouse Ice Rink: Complete schedule at www.palouseicerink.com.

Paradise Creek Bicycles' Winter Hours:
10 a.m. to 6 p.m. Monday-Friday,
10 a.m. to 5 p.m. Saturday
Closed Sunday.

Vicious Cycle 2015: Tentative schedule:
www.rideviciouscycle.com/2015-events

Northwest Collegiate Cycling Conference Champs, April 25-26, hosted by Cougars and Vandals. Homestay Hosts and Race Volunteers needed!

Ronde van Palouse Race: April 26, Spangle, Washington.

CyclingSavvy Course (\$75):
Date/Time TBA; most likely spring/summer 2015.

Course teaches real-world cycling skills for commuters or anyone riding in town. Great for car-free teens or college students.
www.cyclingsavvy.org



Winter/Spring Special: Salsa Mukluk The Perfect All-Terrain Fat Bike—Try or Buy!

The rugged, pedal-powered alternative to the ATV is here: The Salsa Mukluk fat-tired bike. Its 3.8-inch-wide tires can handle anything thrown at it, running on top of snow, mud or sand with equal aplomb.

We have rental 2013 Mukluk 3s available for \$10/hour or \$30/day—take them up on the mountain or out on the trail!

The 2015 Mukluk 3 retails for \$1,899, but can be yours for \$1,709.10 with the coupon or code below.

Fat-tired bikes are a relatively recent invention, dating simultaneously back to 1980 and the early '90s as custom prototypes for use in the snow fields of Alaska and the sandy deserts of New Mexico. 10 years ago, Salsa (www.salsacycles.com) released the first production fat bike, the trend-setting Pugsley.

The suitability of fat bikes to harsh terrain and conditions made them a natural for Antarctic expeditions. In 2012, Eric Larsen attempted to ride a fat bike to the South Pole, but had to turn around. The following year, however, three cycling expeditions reached the South Pole. Maria Leijerstam became the first, riding a fat-tired tricycle. Another person skied and rode a fat bike to the pole. Finally, on January 21, 2014, Daniel P. Burton became the first to ride a two-wheeled fat bike across Antarctica to the South Pole, riding 775 miles one-way.

Specifications (2013 Rental):

Frameset:

Frame . . . Aluminum w/Alternator Dropouts
Fork Salsa Enabler, CroMoly, 1-1/8"

Drivetrain:

Front Derailleur SRAM X.7 HDM
Rear Derailleur SRAM X.7 9-Speed
Cassette SRAM PG-950 11-34T
Chain KMC Z99 RustBuster
Crankset . . Snow ISIS 24/36T Custom for Salsa

Components:

Headset Cane Creek 10 ZS44
Stem Salsa Pro Moto 3
Handlebar. . . . Salsa Pro Moto 3 11-Degree
Grips. SRAM X.5 Triggers
Front Brake Avid BB7
Rear Brake. Avid BB7
Brake Lever Avid FR5
Rotors 160mm Front/160mm Rear
Seatpost. Salsa Pro Moto 3
Saddle WTB Pure V
Tires Surly Nate 26 x 3.8"

Wheels:

Front Hub Salsa Enabler, 32H
Rear Hub Salsa Mukluk 3, 32H
Spokes. DT Swiss Champion
Rims Surly Unholy Rolling Darry

Get 10% off bike with this coupon!
(Or, mention code *FATBIKING2015* to redeem. Expires March 31.)

Introducing the Paradise Creek BMX Team



Hello from Paradise Creek Bicycles BMX Team (PCBMX), an amateur sports team with local members competing at the local, state and national levels!

T-Jay Clevenger and Team Captain Val Carter (see bio, right) worked together to start PCBMX as a local club in 2012 and we have been expanding rapidly since. Our members are Val and Riley Carter, Tim and Zack Spencer, Malachi Stevens, Frank and Dalton Behling, Jon Cooper and myself.

BMX racing is—as any aspect of biking—a challenging but rewarding sport. The first thing I noticed at what became my home track (Joe Albi & Spokane BMX), was families everywhere! Lots of moms and dads mingling with bright, helmeted kids running around. Everyone was so friendly, so welcoming. It didn't take long to feel like I could really enjoy this—and I was just

visiting! Earlier that year I watched my friend's nephew race. "Hey that really does look like fun," I thought. "Maybe I should give it a try?"

This has been one of my favorite good decisions, ever. Choosing 20" and finding a crew of people that have become both my competitors and friends has surpassed any expectation I could have had. More to the point—I found an old friend I had raced as a kid! Now we get to say "Hi!" while our kids are out on the track as we wait for our turns. There's no other family sport out there like it!

Come down to Paradise Creek Bicycles and chat with Val or T-Jay about trying BMX. If you're lucky I might even be around. We'll help you find your biking sweet spot.

Ride safe and wear a helmet,
Solé Farr
 Marketing Director, PCBMX

Employee Spotlight Mechanic Val Carter



Val Carter has been working at Paradise Creek Bicycles for four years, as a fun side job in addition to being a Senior Instructor in the art department at the University of Idaho.

"I love working on bikes," Val said. "Building custom wheels is probably my favorite thing to do."

In addition to commuting by bike to work, Val also races BMX and coaches the PCBMX team (see article at left). Between 1979 and 1985 he raced and worked at several bike shops in the '80s.

BMX is a great draw because "it's 100 percent a family activity." His 11-year-old daughter races alongside him in her age division. He mentioned that kids can start BMX at 3 years old, and can keep riding into their 70s or older.

Mechanic's Corner

How to clean and lubricate your chain

Winter biking can be fun—especially on a fat bike cruising over the snow—but it's hard on drivetrains, mostly because of road grit and dirt. Keeping your chain clean and properly lubricated will help mitigate wear and tear, saving you money on chains and components.

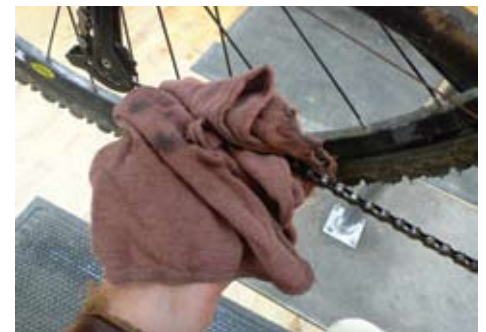
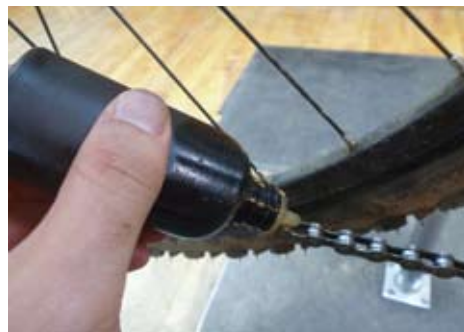
Tools needed: Park CG-2.2 chain cleaning kit, with tool, fluid and additional brush

(\$34.95); Tri-Flow lubricant (\$5.00); and shop rags. These will last several cleanings.

The chain cleaning tool (below left) passes the chain through a series of brushes, which—with the help of included cleaning fluid—remove the grit from inside the links and rollers. This hard-to-reach grit is responsible for most chain wear. Spin the chain through several times

for best results, then dry chain with a clean rag.

Finally, add the Tri-Flow lubricant to the inside of the chain while moving the pedals backward (below center). Put a few drops on each roller, then take another shop rag and wipe it all off (below right). Triflow contains Teflon, which bonds to the metal as a dry lubricant, so the wet oil should be completely wiped off, or it will quickly attract dirt and grit.



New Products: SISU Hockey Mouth Guards, Nu-Muu Athletic Dresses, Ortlieb Waterproof Panniers



For hockey players, we are excited to carry SISU mouth guards (\$24.99). These start flat, but then conform to your mouth, providing a comfortable fit and a long-lasting product. Visit www.sisuguard.com for info.

Several of our long-time lady customers have asked about exercise clothing or dresses that are more flattering than skintight Lycra or Spandex. Taking their suggestions to heart, we are pleased to carry Nu-Muu Classic exercise dresses (\$75) in a variety of colors and patterns. We can also order the Ruu dress with pockets or the Huug sleeves.



Nu-Muu—a Bellingham, Washington, company, www.nuu-muu.com—began life in 2007 to address “a grievous lack of fantastic women’s fitness wear.” Founders Christine Nienstedt and Ashley Fullenwider came up with the basic design, which functions as a flattering cover for whatever exercise wear you may wish to use with it. Whether walking, biking or running, you’ll look fabulous, even if you’re built like a tank!

Finally, Paradise Creek Bicycles is now an official Ortlieb dealer (www.ortliebusa.com). The long-standing German company makes waterproof panniers in a variety of sizes and colors/patterns, all with a 5-year warranty. The classic Back-Roller Design, renowned for long-distance touring and commuting, retails for \$185.

We can also order heavy-duty Busch and Müller battery-operated taillights through Ortlieb. These use special prism lenses that put the light in a wide horizontal strip, giving drivers better depth perception when approaching.



More Historic Moscow Cycling Photos



Left: Dave Mecklin with Moscow’s first bicycle, c. 1880. Above: Sarah Lieuallen (right) and friends at 101 S. Almon St. in Moscow, c. 1890. Photos courtesy Latah County Historical Society